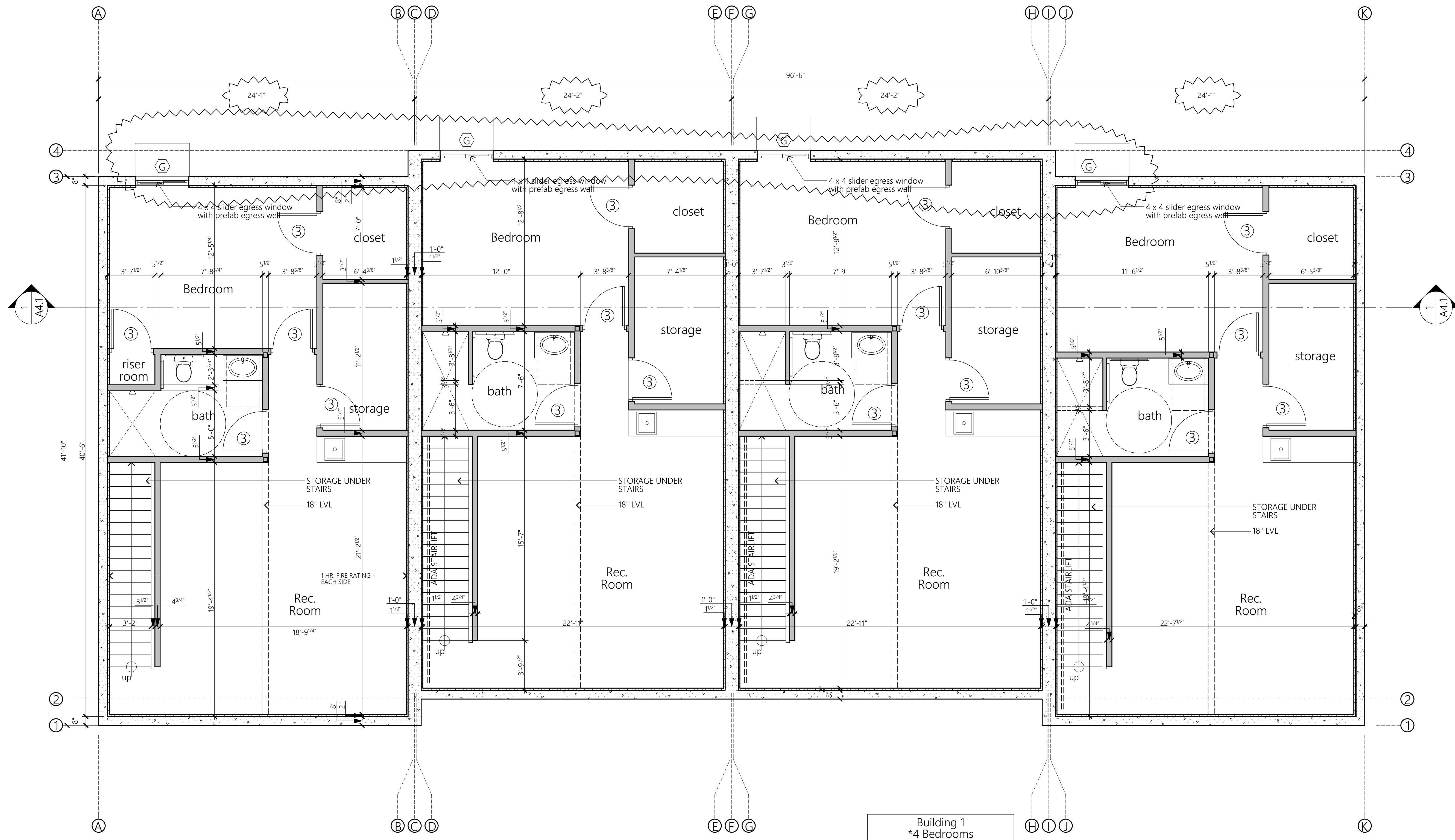


Solstice Townhomes
Cardiff Glen Filing #8, Lots 95 & 96 Cardiff Glen PUD
Glenwood Springs, CO. 81615



SOLSTICE TOWNHOMES DOOR SCHEDULE - ADA BUILDING 1						
MARK	TYPE	MANUFACTURER	ROUGH OPENING	MATRL	FINISH	REMARKS
1	EXTERIOR	T.B.D.	3'-0" X 6'-8"	WOOD / GLASS	STAIN	ENTRY/EXIT DOOR
2	INTERIOR	T.B.D.	3'-0" X 6'-8"	WOOD	STAIN	20 MINUTE RATED DOOR
3	INTERIOR	T.B.D.	3'-0" X 6'-8"	WOOD?	STAIN	PRIVACY
4	EXTERIOR	T.B.D.	4'-0" X 6'-8"	WOOD	STAIN	CLOSET
5	EXTERIOR	T.B.D.	8'-0" X 8'-0"	WOOD / GLASS	STAIN	GARAGE DOOR

- Notes:**
- 1) All exterior doors to be clad. Color T.B.D.
 - 2) See plan for operation and pairing typical.
 - 3) Passage doors between Garage or Storage and living space to carry a 1 hour fire Rating w/ Smoke Gasket and Closer.
 - 4) All exterior doors to have weather stripping and threshold. (Glazing to be dbl pane, insul, low-e glass, typical.

SOLSTICE TOWNHOMES WINDOW SCHEDULE					
MARK	TYPE	WINDOW SIZE	MATRL	FINISH	REMARKS
A	CASEMENT	2'-6" X 3'-6"	CLAD	FACTORY	
B	FIXED	2'-0" X 3'-6"	CLAD	FACTORY	DBL HUNG
C	CASEMENT	3'-0" X 3'-6"	CLAD	FACTORY	
D	CASEMENT	6'-0" X 3'-6"	CLAD	FACTORY	DBL CSMT. - MULLED UNIT
E	AWNING	2'-0" X 2'-0"	CLAD	FACTORY	
F	CSMT / FIX	7'-6" X 3'-6"	CLAD	FACTORY	CSMT/FIXED/CSMT - MULLED UNIT
G	SLIDER	4'-0" X 4'-0"	CLAD	FACTORY	
H	FIXED	6'-0" X 2'-0"	CLAD	FACTORY	
I	CSMT / FIX	9'-0" X 3'-6"	CLAD	FACTORY	CSMT/FIXED/CSMT - MULLED UNIT
J	CASEMENT	5'-0" X 3'-6"	CLAD	FACTORY	DBL CSMT. - MULLED UNIT

Note: See elevations for divided lite patterns and operation
All windows to be (minimum) double pane, low E, insulated, U.N.O.
U-values in range between .42-.45 dependent on action / type of window.
Manufacturer TBD

Building 1 *4 Bedrooms		
	Unit S.F.	Unit Habitable S.F.
Basement	1010	578
Entry Level	1003	265
Main Level	1023	691
TOTAL	3,036	1,534
Building 1 Totals	12,144	6,136

Building 1 Basement
Scale: 1/4" = 1'-0"
ADA Unit

SURVEYOR
TSS
923 Cooper Ave
GWS, CO 81601.
(970) 928-9708

STRUCTURAL
Colorado Structural, Inc.
Mike Arbaney P.E.
tel: (970)-349-5922
fax: (970)-349-5926
mike@coloradostructural.com

CIVIL / SURVEYOR
Pinnacle Design Consulting Group, Inc.
Hans Brucker, PE
805 Buck Point Road
Carbondale, Co 81623
970-618-4427 cell
970-963-2170 office

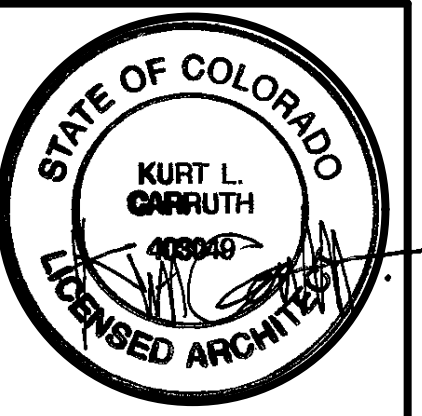
ARCHITECT
hingeARCHITECTS, Ltd.
Kurt Carruth
812 grand avenue, suite 201
glenwood springs, co. 81601
p. 970-309-4432
kurt@hinge-architects.com

CONTRACTOR
Aspen Built, Inc.
1101 Village Rd.
Ste. LL1B
Carbondale, CO. 81623
970-618-3555
abdi@aspenbuilt.net

OWNER
Cardiff 96, LLC
1101 Village Rd.
Ste. LL1B
Carbondale, CO. 81623
970-618-3555
abdi@aspenbuilt.net

DRAWING	ISSUE
Development Plan Review Updates	11-27-18
Development Plan Review Updates	12-04-18
Structural set	03-14-19
Development Plan Permit Review	04-26-19
Development Plan Permit Review	06-11-19
Update Dev. Plan permit	08-19-19
Permit Set	02-21-20
Permit Set Update	03-17-20

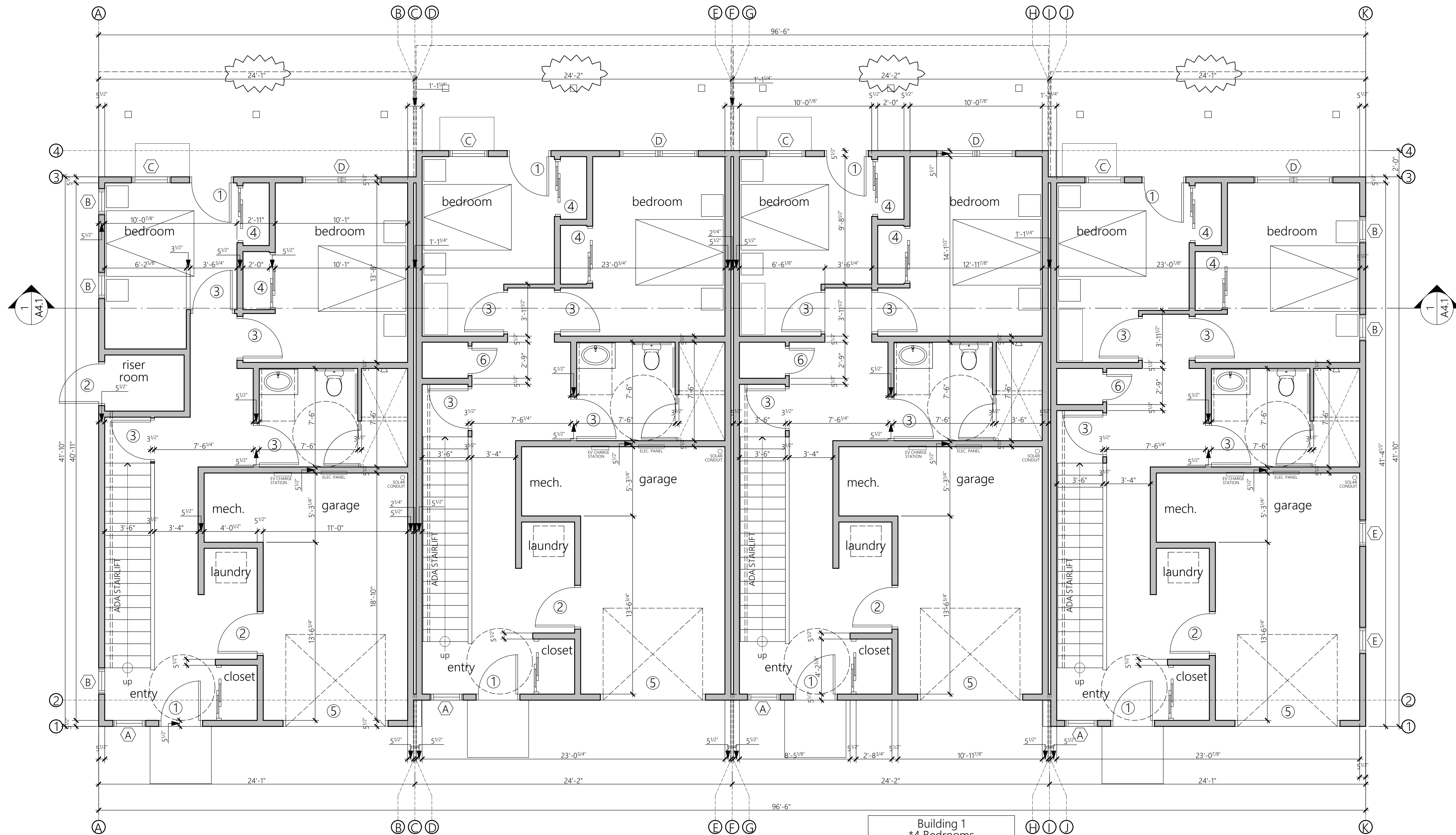
Project designed and drawn to adhere to the 2015 IRC.



Solstice Townhomes
Cardiff Glen Filing #8, Lots 95 & 96 Cardiff Glen PUD
Glenwood Springs, CO. 81615

DRAWING	ISSUE
Development Plan Review Updates	11-27-18
Development Plan Review Updates	12-04-18
Development Plan Review Updates	03-14-19
Development Plan Review Updates	04-26-19
Development Plan Review Updates	06-11-19
Update Dev. Plan permit	08-19-19
Permit Set	02-21-20
Permit Set Update	03-17-20

Project designed and drawn to adhere to the 2015 IRC.



MARK	TYPE	MANUFACTURER	ROUGH OPENING	MATRL	FINISH	REMARKS
1	EXTERIOR	T.B.D.	3'-0" X 6'-8"	WOOD / GLASS	STAIN	ENTRY/EXIT DOOR
2	INTERIOR	T.B.D.	3'-0" X 6'-8"	WOOD	STAIN	20 MINUTE RATED DOOR
3	INTERIOR	T.B.D.	3'-0" X 6'-8"	WOOD?	STAIN	PRIVACY
4	EXTERIOR	T.B.D.	4'-0" X 6'-8"	WOOD	STAIN	CLOSET
5	EXTERIOR	T.B.D.	8'-0" X 8'-0"	WOOD / GLASS	STAIN	GARAGE DOOR

- Notes:
 1) All exterior doors to be clad. Color T.B.D.
 2) See plan for operation and pairing typical.
 3) Passage doors between Garage or Storage and living space to carry a 1 hour fire Rating w/ Smoke Gasket and Closer.
 4) All exterior doors to have weather stripping and threshold. (Glazing to be dbl pane, insul, low-e glass, typical.

MARK	TYPE	WINDOW SIZE	MATRL	FINISH	REMARKS
A	CASEMENT	2'-6" X 3'-6"	CLAD	FACTORY	
B	FIXED	2'-0" X 3'-6"	CLAD	FACTORY	DBL HUNG
C	CASEMENT	3'-0" X 3'-6"	CLAD	FACTORY	
D	CASEMENT	6'-0" X 3'-6"	CLAD	FACTORY	DBL CSMT. - MULLED UNIT
E	AWNING	2'-0" X 2'-0"	CLAD	FACTORY	
F	CSMT / FIX	7'-6" X 3'-6"	CLAD	FACTORY	CSMT/FIXED/CSMT - MULLED UNIT
G	SLIDER	4'-0" X 4'-0"	CLAD	FACTORY	
H	FIXED	6'-0" X 2'-0"	CLAD	FACTORY	
I	CSMT / FIX	9'-0" X 3'-6"	CLAD	FACTORY	CSMT/FIXED/CSMT - MULLED UNIT
J	CASEMENT	5'-0" X 3'-6"	CLAD	FACTORY	DBL CSMT. - MULLED UNIT

Note: See elevations for divided lite patterns and operation
 All windows to be (minimum) double pane, low E, insulated, U.N.O.
 U-values in range between .42-.45 dependent on action / type of window.
 Manufacturer TBD

	Unit S.F.	Unit Habitable S.F.
Basement	1010	578
Entry Level	1003	265
Main Level	1023	691
TOTAL	3,036	1,534
Building 1 Totals	12,144	6,136

Building 1 Entry Level

Scale: 1/4" = 1'-0"
ADA Unit

SURVEYOR
TSS
923 Cooper Ave
GWS, CO 81601.
(970) 928-9708

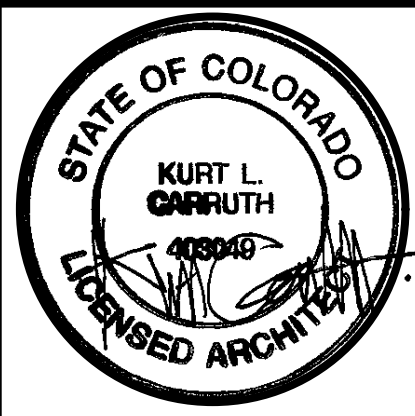
STRUCTURAL
Colorado Structural, Inc.
Mike Arbaney P.E.
tel: (970)-349-5922
fax: (970)-349-5926
mike@coloradostructural.com

CIVIL / SURVEYOR
Pinnacle Design Consulting Group, Inc.
Hans Brucker, PE
805 Buck Point Road
Carbondale, Co 81623
970-618-4427 cell
970-963-2170 office

ARCHITECT
hingeARCHITECTS, ltd.
Kurt Carruth
812 grand avenue, suite 201
glenwood springs, co. 81601
p. 970-309-4432
kurt@hinge-architects.com

CONTRACTOR
Aspen Built, Inc.
1101 Village Rd.
Ste. LL1B
Carbondale, CO. 81623
970-618-3555
abdi@aspenbuilt.net

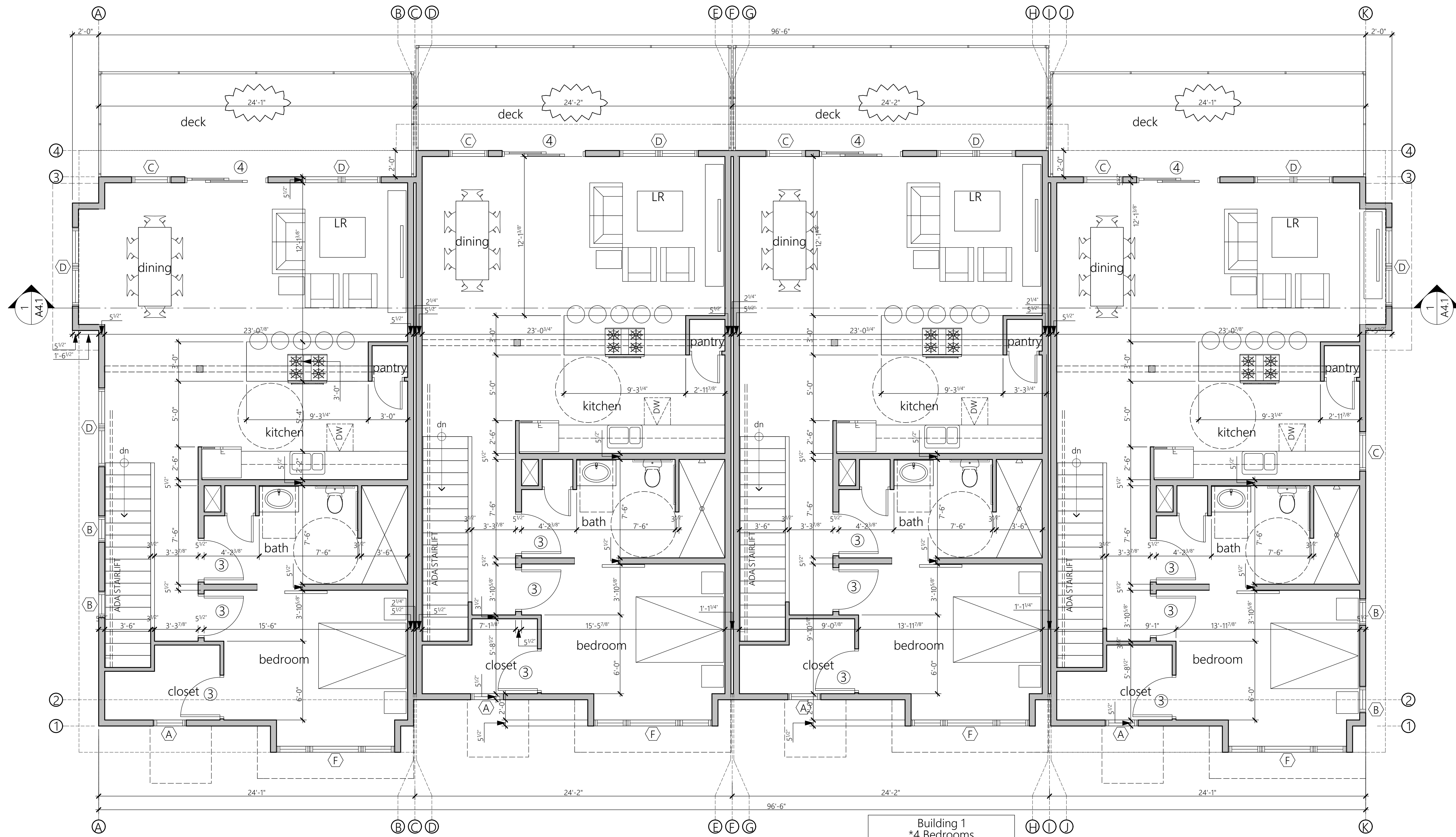
OWNER
Cardiff 96, LLC
1101 Village Rd.
Ste. LL1B
Carbondale, CO. 81623
970-618-3555
abdi@aspenbuilt.net



Solstice Townhomes
Cardiff Glen Filing #8, Lots 95 & 96 Cardiff Glen PUD
Glenwood Springs, CO. 81615

DRAWING	ISSUE
Development Plan Review Updates	11-27-18
Development Plan Review Updates	12-04-18
Structural set 03-14-19	
Development Plan Permit Review	04-26-19
Development Plan Permit Review	06-11-19
Update Dev. Plan permit 08-19-19	
Permit Set Update 03-17-20	

Project designed and drawn to adhere to the 2015 IRC.



Building 1 Main Level

Scale: 1/4" = 1'-0"
ADA Unit

MARK	TYPE	MANUFACTURER	ROUGH OPENING	MATRL	FINISH	REMARKS
1	EXTERIOR	T.B.D.	3'-0" X 6'-8"	WOOD / GLASS	STAIN	ENTRY/EXIT DOOR
2	INTERIOR	T.B.D.	3'-0" X 6'-8"	WOOD	STAIN	20 MINUTE RATED DOOR
3	INTERIOR	T.B.D.	3'-0" X 6'-8"	WOOD?	STAIN	PRIVACY
4	EXTERIOR	T.B.D.	4'-0" X 6'-8"	WOOD	STAIN	CLOSET
5	EXTERIOR	T.B.D.	8'-0" X 8'-0"	WOOD / GLASS	STAIN	GARAGE DOOR

- Notes:
 1) All exterior doors to be clad. Color T.B.D.
 2) See plan for operation and pairing typical.
 3) Passage doors between Garage or Storage and living space to carry a 1 hour fire Rating w/ Smoke Gasket and Closer.
 4) All exterior doors to have weather stripping and threshold. (Glazing to be dbl pane, insul, low-e glass, typical.

MARK	TYPE	WINDOW SIZE	MATRL	FINISH	REMARKS
A	CASEMENT	2'-6" X 3'-6"	CLAD	FACTORY	
B	FIXED	2'-0" X 3'-6"	CLAD	FACTORY	DBL HUNG
C	CASEMENT	3'-0" X 3'-6"	CLAD	FACTORY	
D	CASEMENT	6'-0" X 3'-6"	CLAD	FACTORY	DBL CSMT. - MULLED UNIT
E	AWNING	2'-0" X 2'-0"	CLAD	FACTORY	
F	CSMT / FIX	7'-6" X 3'-6"	CLAD	FACTORY	CSMT/FIXED/CSMT - MULLED UNIT
G	SLIDER	4'-0" X 4'-0"	CLAD	FACTORY	
H	FIXED	6'-0" X 2'-0"	CLAD	FACTORY	
I	CSMT / FIX	9'-0" X 3'-6"	CLAD	FACTORY	CSMT/FIXED/CSMT - MULLED UNIT
J	CASEMENT	5'-0" X 3'-6"	CLAD	FACTORY	DBL CSMT. - MULLED UNIT

Note: See elevations for divided lite patterns and operation
 All windows to be (minimum) double pane, low E, insulated, U.N.O.
 U-values in range between .42-.45 dependent on action / type of window.
 Manufacturer TBD

	Unit S.F.	Unit Habitable S.F.
Basement	1010	578
Entry Level	1003	265
Main Level	1023	691
TOTAL	3,036	1,534
Building 1 Totals	12,144	6,136

SURVEYOR
TSS
923 Cooper Ave
GWS, CO 81601.
(970) 928-9708

STRUCTURAL
Colorado Structural, Inc.
Mike Arbaney P.E.
tel: (970)-349-5922
fax: (970)-349-5926
mike@coloradostructural.com

CIVIL / SURVEYOR
Pinnacle Design Consulting Group, Inc.
Hans Brucker, PE
805 Buck Point Road
Carbondale, Co 81623
970-618-4427 cell
970-963-2170 office

ARCHITECT
hingeARCHITECTS, ltd.
Kurt Carruth
812 grand avenue, suite 201
glenwood springs, co. 81601
p. 970-309-4432
kurt@hinge-architects.com

CONTRACTOR
Aspen Built, Inc.
1101 Village Rd.
Ste. LL1B
Carbondale, CO. 81623
970-618-3555
abdi@aspenbuilt.net

OWNER
Cardiff 96, LLC
1101 Village Rd.
Ste. LL1B
Carbondale, CO. 81623
970-618-3555
abdi@aspenbuilt.net